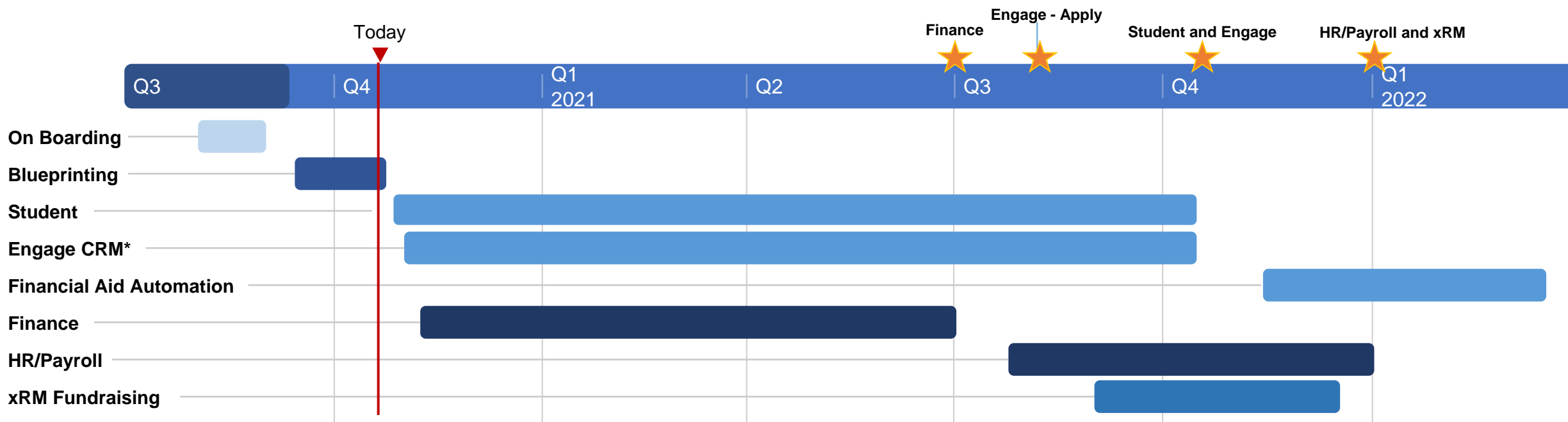


Southwest Wisconsin TECHNICAL COLLEGE

Project RISE Update

October 2020





*Customer Relationship Management

? On Budget **✓ On Schedule**



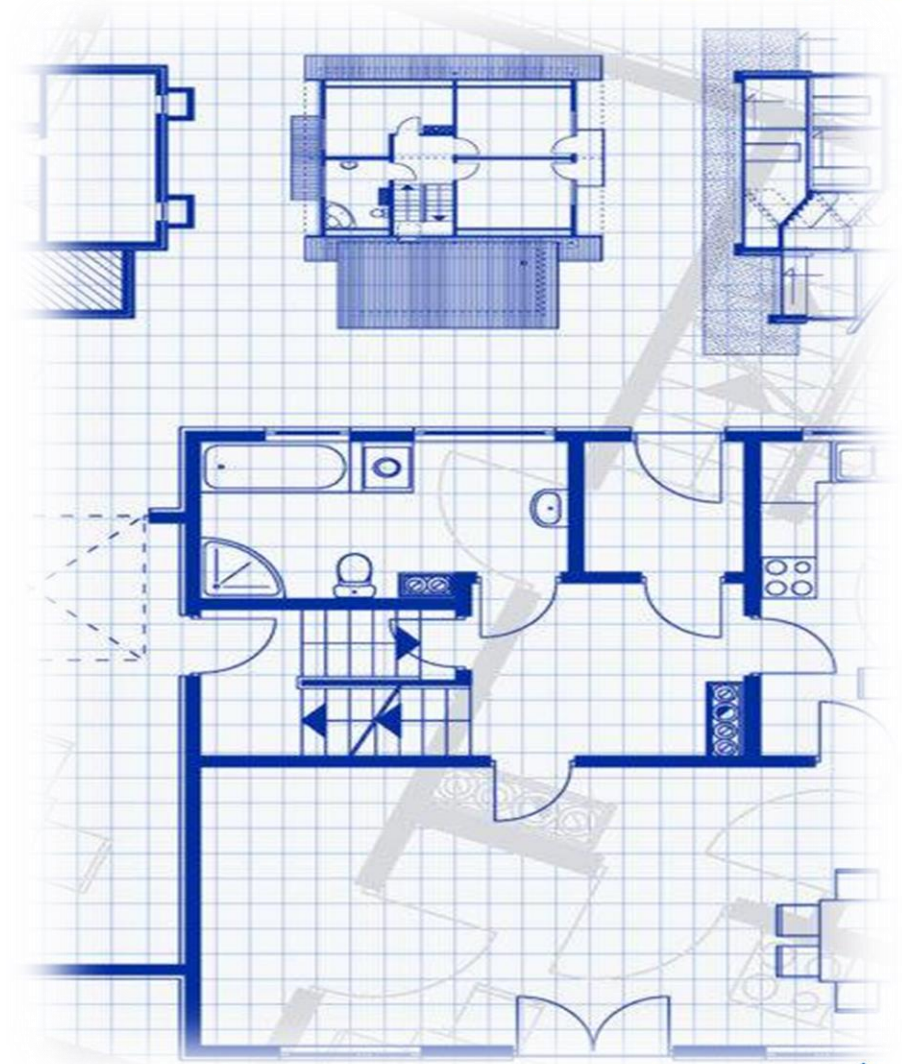
- Blueprinting sessions nearing completion:
 - Documents to be delivered on Oct 26 and reviewed through Nov 5
- Key decisions on Data Archiving may impact schedule; decision end of November
- Issues with Budget and Scheduling deliverables have been escalated

What's Going Well

- Blueprinting September 14 – October 23
- SWTC Team very engaged and open to change
- SWTC very collaborative across departments
- Using future state maps as a guide has improved optimization of processes
- Anthology is responding to SWTC suggestions and course correcting

What's Not Going Well

- Anthology new methodology: underestimated the amount of time needed
- Anthology has needed frequent reminders to use the future state maps during sessions



Risks

- Function Gaps
 - Continuing Ed (CE) Shopping Cart Experience
 - State Reporting by Fiscal Year
- Scope Gaps
 - Questions about Foundation Implementation
 - Budget Planning & Position Budgeting

Assumptions

- None at this time

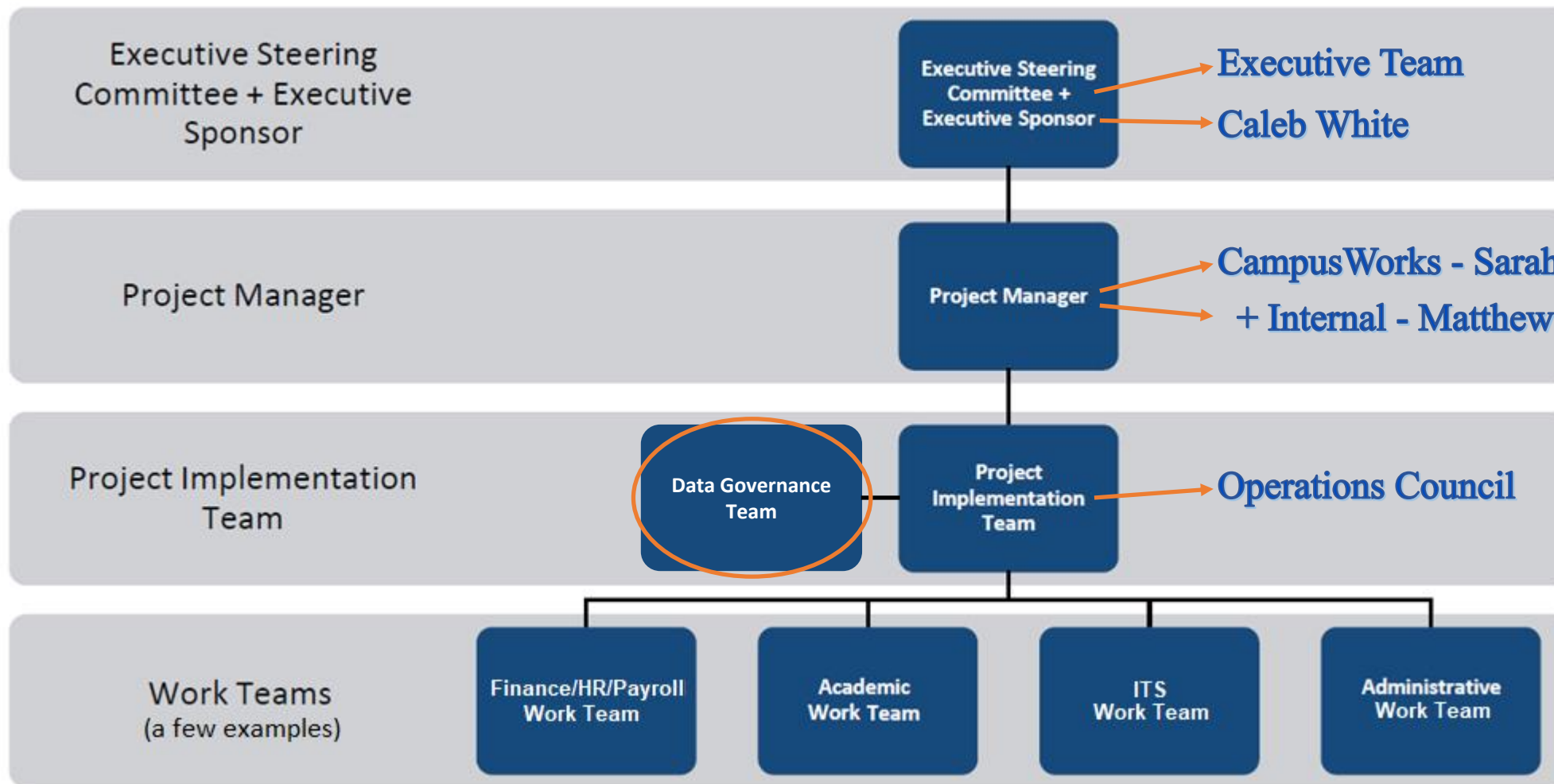


Issues

- Budget Plan & Actuals
- Scheduling
 - Project Plan
 - Schedules in advance
- References
- Big Picture Solutions

Dependencies

- Time Sheet 3rd Party Software choice
- Data Archiving vs Full Data Load decision



System Analysts

- Advancement / Recruitment
- Finance / HR / Payroll
- Student Services / Financial Aid

Calvin Butteris
Andy Draus
Darwyn Wolfe

LTE Positions

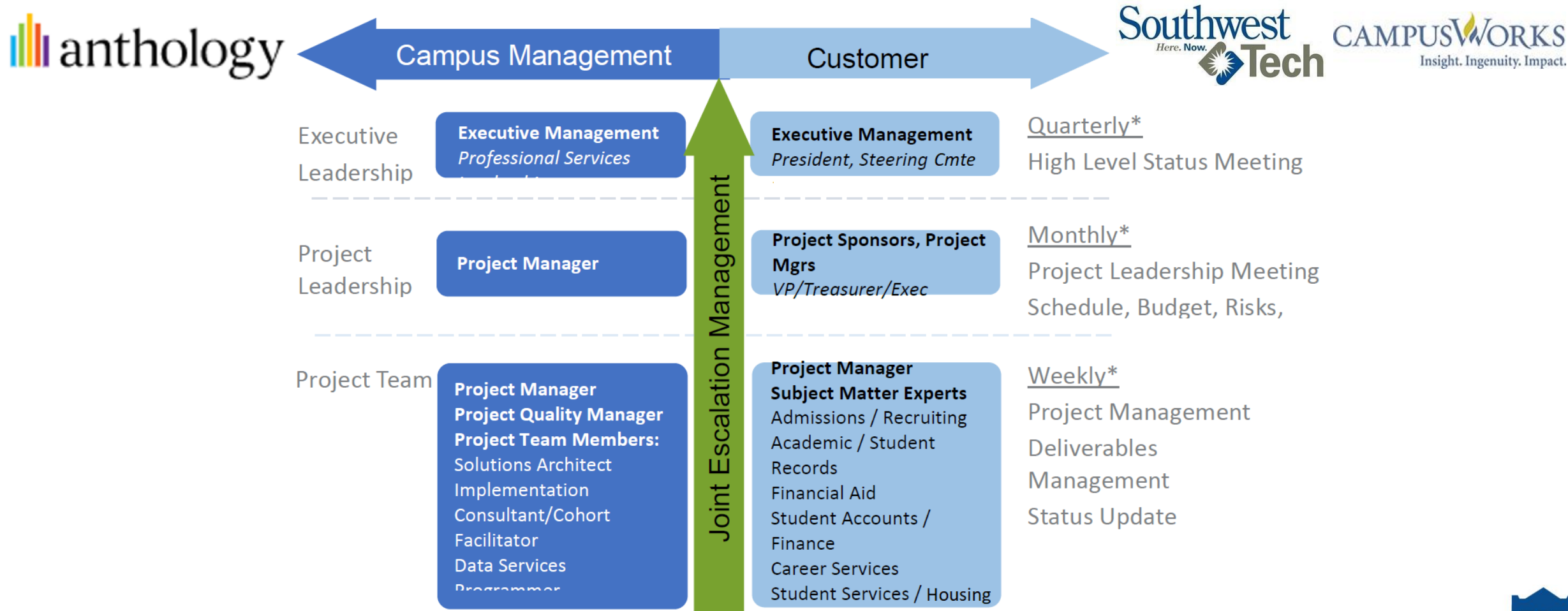
- Student Services
- FA/Business Office
- Admin Assistant Coverage
- Human Resources / Payroll
- Finance / Recruitment - *Split Roles:*
 - Marketing
 - Finance

Tina Leis
Karen Forseth
Stephanie Evanchik
Demi Vetesnik

Holly Straka
In Progress



Are expectations being met?



Southwest Wisconsin TECHNICAL COLLEGE

THANK YOU!

STAY UP TO DATE WITH PROGRESS:

- www.swtc.edu/erp
- Yammer posts

Questions or Comments:

erp@swtc.edu

