

GRADUATE SUCCESS



2013 REPORT

ABOUT THIS REPORT

This Graduate Success Report is a summary of the follow-up of Southwest Tech's 2013 graduates who were awarded an associate degree, technical diploma, or a certificate for successfully completing their program of study between July 1, 2012 and June 30, 2013. The data reported are a valid representation of the 2012–2013 graduate population of Southwest Tech. Wage and salary data are based only on gross wage, and not take-home pay, and do not include overtime pay, fringe benefits, and/or commissions.

REASONS FOR ATTENDING

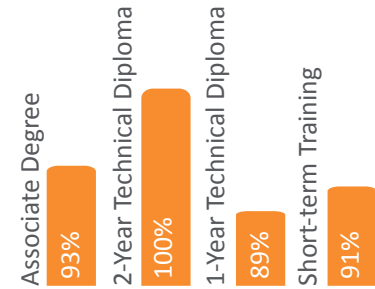
The main reason is directly tied to employability.

- Prepare for a Job: 42%
 - Career Change: 27%
 - Improve Existing Skills: 7%
- Other reasons:**
 Further Education: 15%
 Personal Interest: 6%

76%
EMPLOYABILITY

ANTHONY

The Auto Technician program touched on just about everything that would be encountered in the field.



EMPLOYED BY DEGREE

91% are employed within 1 year after graduation.

Southwest
Tech
YOUR KEY TO
SUCCESS

EDUCATIONAL EXPERIENCE

VERY SATISFIED/SATISFIED

97%

JUSTIN

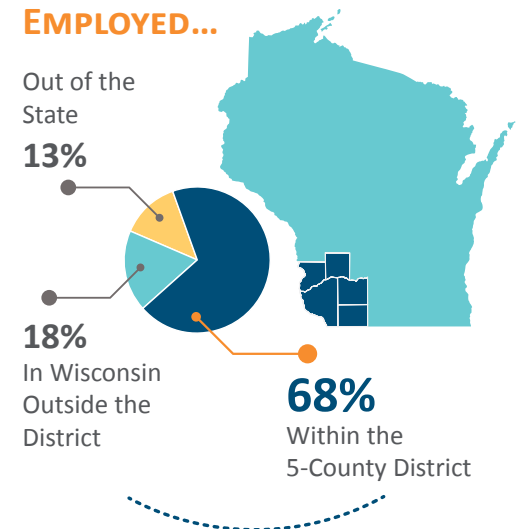
I would recommend this college to anyone pursuing post-secondary education.

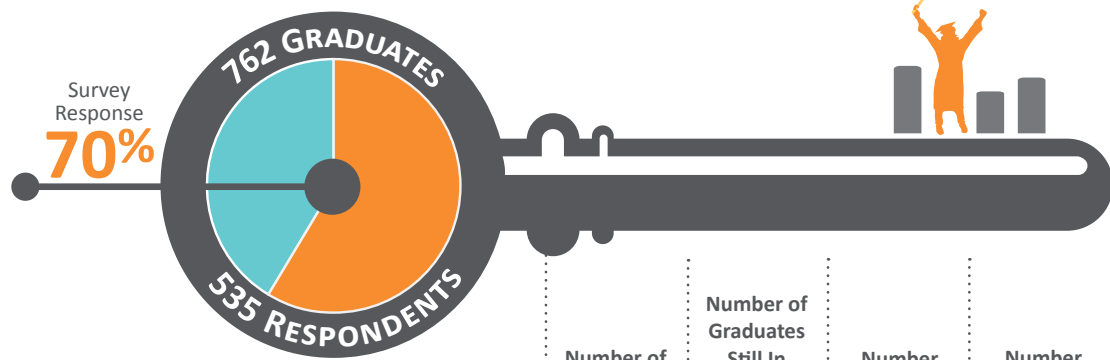
GRADUATES ARE EMPLOYED...

Out of the State
13%

18%
In Wisconsin
Outside the
District

68%
Within the
5-County District





CLASS OF 2013
GRADUATE SUCCESS
 RESULTS BY PROGRAM

Program	Number of Graduates	Number of Graduates Still In School	Number Replied	Number Employed	Number Employed in Related Occupation	Number Employed in Unrelated Occupation	Number Employed in SW District	Median Hourly Wage [^]	Hourly Salary Range
TWO-YEAR ASSOCIATE DEGREE									
Accounting	10	1	8	4	2	2	1	\$13.51	\$12.00 – \$15.02
Administrative Professional	5	0	3	2	2	0	1	\$12.13	\$10.00 – \$14.25
Agribusiness/Science Technology	9	0	8	6	5	1	4	\$12.00	\$10.00 – \$24.00
Business Management	19	1	14	13	9	4	7	\$13.25	\$10.00 – \$30.00
Criminal Justice – Law Enforcement	12	0	7	6	4	2	2	\$15.25	\$14.00 – \$17.29
Culinary Management	6	1	5	3	3	0	2	\$9.00	\$8.00 – \$11.50
Direct Entry Midwife	5	0	4	4	3	1	1	\$12.19	\$9.38 – \$15.00
Early Childhood Education	12	2	10	6	4	2	4	\$13.63	\$8.50 – \$20.00
Electromechanical Technology	9	1	6	5	5	0	5	\$14.00	\$11.50 – \$20.73
Engineering Technologist	3	0	2	2	2	0	0	\$17.36	\$17.35 – \$17.36
Golf Course Management	7	2	6	3	3	0	0	\$9.00	\$7.93 – \$15.00
Graphic & Web Design	13	1	13	12	9	3	10	\$15.00	\$9.75 – \$45.00
Human Services Associate	8	1	8	5	4	1	4	\$10.00	\$8.00 – \$16.29
IT-Computer Support Specialist	4	1	4	3	2	1	3	\$33.00	\$16.00 – \$50.00
IT-Network Communication Specialist	2	0	1	1	1	0	0	*	*
IT-Web Analyst/Programmer	4	0	3	2	1	1	2	*	*
Medical Laboratory Technician	12	0	12	12	12	0	5	\$17.25	\$14.50 – \$19.95
Nursing - Associate Degree	34	0	23	23	23	0	17	\$23.82	\$18.00 – \$32.00
Physical Therapist Assistant	10	0	9	9	7	2	5	\$20.00	\$17.00 – \$28.00
TWO-YEAR TECHNICAL DIPLOMA									
Ag Power & Equipment Technician	17	2	9	7	6	0	3	\$12.00	\$10.00 – \$19.10
Automotive Technician	9	0	4	4	3	1	2	\$10.50	\$10.00 – \$12.00
ONE-YEAR TECHNICAL DIPLOMA									
Accounting Assistant	6	1	5	4	2	2	4	\$11.13	\$8.25 – \$14.00
Auto Collision Repair & Refinish Technician	9	1	7	5	3	1	4	*	*
Barber/Cosmetologist	16	0	11	10	6	3	6	\$8.13	\$7.50 – \$8.65
Bricklaying & Masonry	1	0	0	0	0	0	0	*	*
Building Trades-Carpentry	5	0	5	5	4	1	4	\$15.00	\$12.00 – \$16.00
Child Care Services	6	1	4	3	1	2	3	*	*
Culinary Specialist	3	0	3	2	2	0	0	\$11.36	\$11.22 – \$11.50
Dairy Herd Management	10	2	5	3	3	0	1	\$12.50	\$9.00 – \$12.50
Electrical Power Distribution	17	0	11	10	9	1	3	\$19.52	\$12.50 – \$25.26
Esthetician	9	0	8	6	3	3	3	\$10.04	\$10.00 – \$10.08
Medical Assistant	22	2	15	10	4	6	7	\$11.34	\$10.25 – \$14.33
Medical Transcription	7	0	5	4	0	4	2	*	*
Office Support Specialist	2	1	2	1	1	0	1	*	*
Practical Nursing	57	19	52	22	19	3	16	\$17.19	\$11.85 – \$19.00
Welding	24	3	16	11	11	0	6	\$16.00	\$12.20 – \$18.50
LESS THAN ONE YEAR TECHNICAL DIPLOMA									
Criminal Justice – Academy	15	0	5	5	5	0	2	\$15.26	\$13.00 – \$20.00
CNC Setup/Operator	6	0	5	5	4	1	2	\$13.73	\$12.00 – \$15.46
Dental Assistant	27	1	17	13	7	6	9	\$11.50	\$10.66 – \$14.89
Medical Coding Specialist	29	2	23	16	3	12	9	\$17.29	\$15.88 – \$17.32
Nursing Assistant	274	46	173	115	95	19	77	\$11.60	\$8.75 – \$14.98

[^] Median salaries reflect the middle salary range where half of the responding graduates received more than the range shown and half received less than the range shown.
^{*} Salaries/Wages are listed only for programs where two or more graduates reported salaries/wages in related occupations.



WHERE ARE THEY WORKING?

Many employers open their doors to our students. Here are just a few who gave our 2013 graduates a great start to their new careers.

- Southwest Accounting, Inc.
- HUSCO International, Inc.
- Alliance Laundry Systems
- Dubuque Golf & Country Club
- United Clinical Laboratories
- Mercy Medical Center
- Grant Regional Health Center

- Marshfield Clinic
- Baker Iron Works, LLC
- Dillman Equipment, Inc.
- Cabela's
- Cummins Emission Solutions
- Dean Clinic - Essentials Skin Care
- Faith In Birth Midwifery Services

- Holtger Bros., Inc.
- Kamps-Hollow Genetics
- Luther Manor
- Play Haven Atlas, LLC
- Women's Economic Agenda Project (WEAP)
- Wisconsin Secure Program Facility



\$\$

WAGES

Top Paying Programs of 2013

Based on the Median Hourly Wage*

* Median salaries reflect the middle salary where half of the responding graduates received more than the salary shown and half received less than the salary shown.

Nursing-Associate Degree	\$23.82
Physical Therapist Assistant	\$20.00
Electrical Power Distribution	\$19.52
Medical Coding Specialist	\$17.29
Medical Laboratory Technician	\$17.25
Practical Nursing	\$17.19
Welding	\$16.00
Criminal Justice-Law Enforcement	\$15.25
Building Trades-Carpentry	\$15.00
Graphic and Web Design	\$15.00

SHARON

Southwest Tech has wonderful instructors who actually care about their students and their success. The instructors are a huge bonus for the Accounting Assistant program. You can really tell they love what they are doing.

SCOTT

The Culinary Management program made me better able to understand and fit into our changing society. Southwest Tech has the best instructors and the very best equipment and materials. It is a nice, updated school and I was proud to be a student.

Accommodations:
608.822.2631
accom@swtc.edu

Southwest  Tech

1800 Bronson Blvd., Fennimore, WI 53809
800.362.3322 • www.swtc.edu

AA/EOE
©2014 Southwest
Wisconsin Technical
College, All Rights
Reserved.

This report was prepared by the Southwest Tech Institutional Advancement Office. For questions, please call 608.822.2475 (tdd: 608.822.2072) or email mhenkel@swtc.edu.