



Art, Music, and Language Arts
Fall Semester • Course No. 10-307-178
3 credits • \$422.26*

This course will focus on beginning level curriculum development in the specific content areas of art, music, and language arts. Course competencies include: integrate strategies that support diversity and anti-bias perspectives; examine the critical role of play; establish a developmentally appropriate environment; develop activity plans that promote child development and learning; analyze caregiving routines as curriculum; create developmentally appropriate language, literature, and literacy activities; create developmentally appropriate music and movement activities.

Infant/Toddler Development

Spring Semester • Course No. 10-307-151
3 credits • \$422.26*

Students will explore diversity and anti-bias perspectives; analyze development of infants and toddlers (conception to three years); correlate prenatal conditions with development; summarize child development theories; analyze the role of heredity and the environment; examine research-based models; examine culturally and developmentally appropriate environments for infants and toddlers.

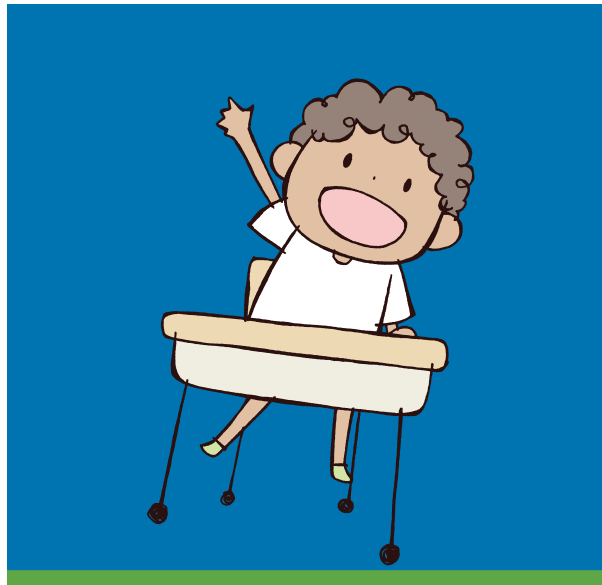


Preschool Capstone Project
Spring Semester • Course No. 10-307-130
3 credits • \$422.26*

Earn Your Wisconsin Professional Preschool Credential. Make more money doing what you love by advancing in the Wisconsin Youngstar Program! Prior to taking the Preschool Capstone Class, the following classes must have been completed:

- Foundations of ECE (10-307-148)
- Child Development (10-307-179)
- Health, Safety, & Nutrition (10-307-167)
- Guiding Children's Behavior (10-307-188)
- Art Music, and Language Arts (10307-178)

The Preschool Capstone Project is the final class.



Questions?

Call Beth Whitish,
608-822-2459
or email bwhitish@swtc.edu
tdd: 608-822-2072

For more information
about the
Child Care Services and
Early Childhood Education programs,
visit
www.swtc.edu

**All costs are approximate and subject to change.*

If you need an accommodation call, 608.822.2631
or email accom@swtc.edu.



1800 Bronson Blvd., Fennimore, WI 53809
 800.362.3322

REV. 10/2013

Early Childhood Education



ONLINE COURSES



Southwest Tech Early Childhood Education Online Courses



Health, Safety, & Nutrition

Fall Semester • Course No. 10-307-167
3 credits • \$422.26*

Examine the topics of health, safety, and nutrition within the context of the early childhood educational setting. Integrate strategies that support diversity and anti-bias perspectives; follow governmental regulations and professional standards as they apply to health, safety, and nutrition; provide a safe, healthy, and nutritionally sound early childhood program; adhere to child abuse and neglect mandates; apply Sudden Infant Death Syndrome (SIDS) risk reduction strategies; and incorporate health, safety, and nutrition concepts into the children's curriculum.

Administering an Early Childhood Education Program

Fall Semester • Course No. 10-307-198
3 credits • \$422.26*

Integrate strategies that support diversity and anti-bias perspectives; analyze the components of an ECE facility; design an ECE program; analyze the aspects of personnel supervision; outline financial components of an ECE program; apply laws and regulations related to an ECE facility; and advocate for the early childhood profession.



Guiding Children's Behaviors

Fall Semester, Course No. 10-307-148
3 credits • \$422.26*

Examine positive strategies to guide children's behavior in the early childhood education setting. Integrate strategies that support diversity and anti-bias perspectives; summarize early childhood guidance principles; analyze factors that affect the behavior of children; practice positive guidance strategies; develop guidance strategies to meet individual needs; and create a guidance philosophy.



Denotes required courses to earn your Wisconsin Professional Preschool Credential.

Wisconsin Model of Early Learning Standards (WMELS)

Fall Semester • Course No. 10-307-131
1 credit • \$140.75*

Students analyze the guiding principles and the five developmental domains related to the Wisconsin Early Learning Standards, apply WMELS to various developmentally appropriate curriculum models, activities and assessments, integrate the Wisconsin Early Learning Standards into the program's teaching cycle (ongoing assessment, planning and curriculum goals, and implementation), evaluate learning and assessment activities using the early learning standards for each individual child, and relate the WMELS to other standards and indicators.



Foundations of Early Childhood

Spring Semester • Course No. 10-307-148
3 credits • \$422.26*

You will be introduced to the early childhood profession. Integrate strategies that support diversity and anti-bias perspectives; investigate the history of early childhood education; summarize types of settings; identify the components of a quality program; summarize responsibilities of professionals; and explore curriculum models.

Curriculum Planning

Spring Semester • Course No. 10-307-166
3 credits • \$422.26*

Examine the components of curriculum planning in early childhood education. Integrate strategies that support diversity and anti-bias perspectives; examine the critical role of play; establish a developmentally appropriate environment; examine caregiving routines as curriculum; develop activity and unit plans that promote child development and learning; and analyze curriculum models.



Child Development

Fall Semester • Course No. 10-307-179
3 credits • \$422.26*

Examine child development within the context of the early childhood education setting. Analyze social, cultural, and economic influences on child development; summarize child development theories; analyze development of children ages three through eight; summarize the methods and designs of child development research; analyze the role of heredity and the environment.

Family and Community

Spring Semester • Course No. 10-307-195
3 credits • \$422.26*

Examine the role of relationships with family and community in early childhood education. Implement strategies that support diversity and anti-bias perspectives when working with families and community; analyze contemporary family patterns, trends, and relationships; utilize effective communication strategies; establish ongoing relationships with families; advocate for children and families; and work collaboratively with community resources.

Children With Differing Abilities

Spring Semester • Course No. 10-307-187
3 credits • \$422.26*

Students will focus on the child with differing abilities in an early childhood education setting. Course competencies include: integrate strategies that support diversity and anti-bias perspectives; provide inclusive programs for young children; apply legal and ethical requirements including, but not limited to, ADA and IDEA; differentiate between typical and exceptional development; analyze the differing abilities of children with physical, cognitive, health/medical, communication, and/or behavioral/emotional disorders; work collaboratively with community and professional resources; utilize an individual educational plan (IEP/IFSP) for children with developmental differences; adapt curriculum to meet the needs of children with developmental differences; cultivate partnerships with families who have children with developmental differences.